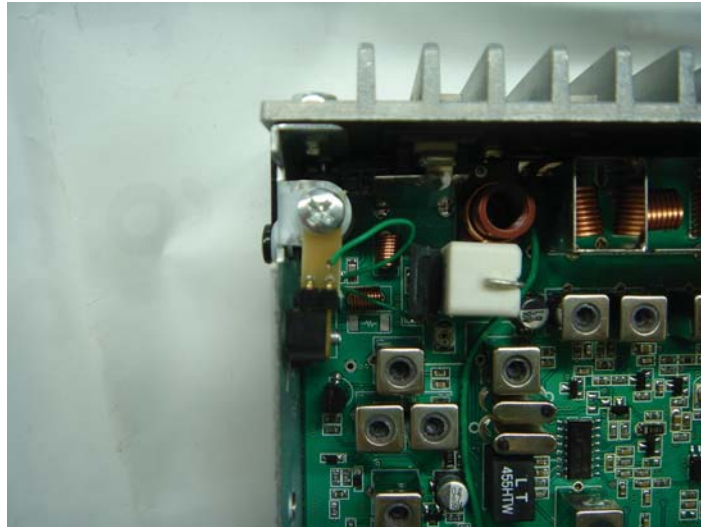


# AE6790 and AE6891 POWER & CHANNEL MODIFICATIONS

**AE-6790 , AE-6891 AM 1W to 4W CHANGE**

**AM 1W CONNECTOR POSITION**



**AM 4W CHANGE CONNECTOR POSITION**



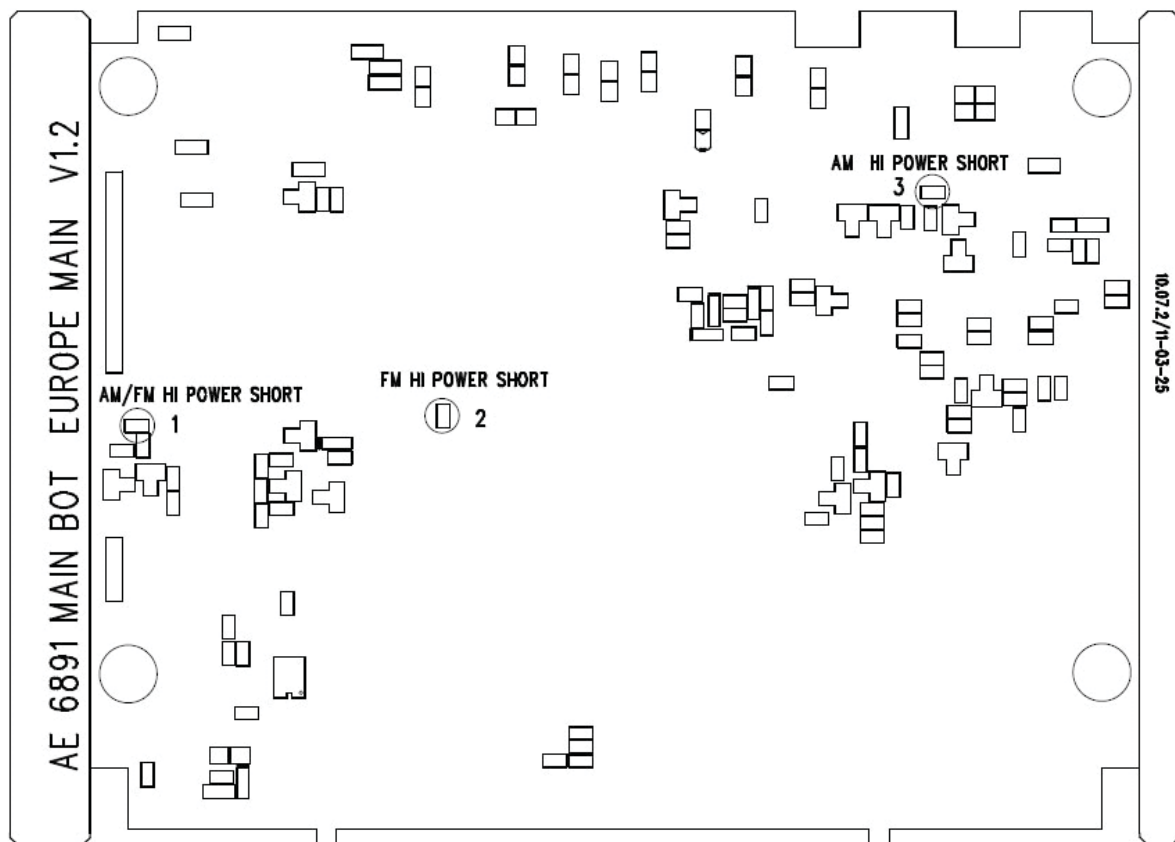
**These are the legal switchings after the new ECC Decision (11)03 becomes valid in the different countries.**

The following modifications are not legal for CB users within EU and R&TTE Countries.

The modifications may be only allowed in Non-EU Countries, where no limitations according to R&TTE are applied, depending on national regulations.

### AE-6891 HI POWER Modifications

- NO 1 SHOULD BE DONE FIRST REGARDLESS AM OR FM.
- NO 2 IS NECESSARY TO DO FOR FM HIGH POWER.  
FM POWER IS INCREASED BY 1.5~2W.
- NO 3 IS NECESSARY TO DO FOR AM HIGH POWER.  
AM POWER IS INCREASED TO 4W IN CASE WHERE AM JUMPER IS IN 1W POSITION  
AM POWER IS INCREASED TO MAXIMUM POSSIBLE POWER IN CASE WHERE THE AM JUMPER IS IN 4 WATT POSITION.



## AE-6891 240CH CHANGE

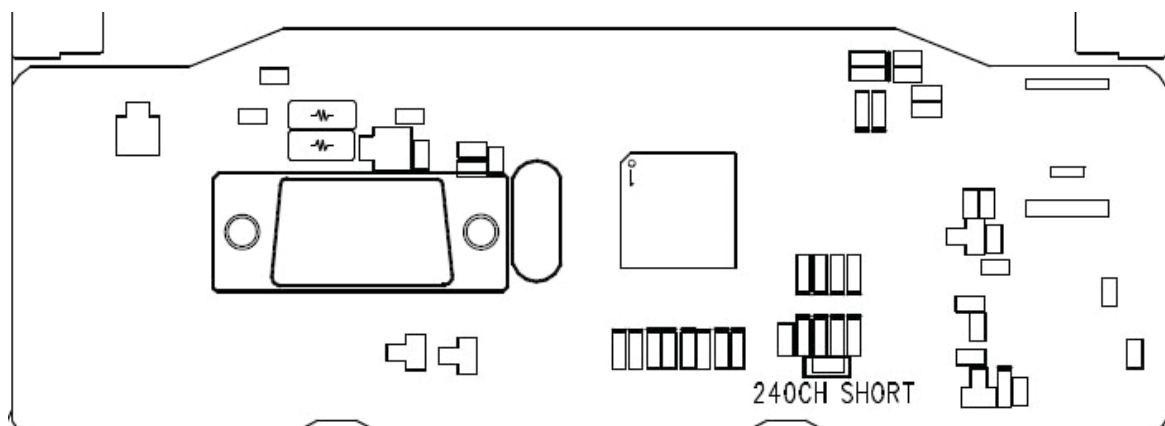
- MAKE SHORT CIRCUIT IN BELOW PCB PATTERN.
- POWER OFF AFTER MAKING RE-ASSEMBLY.
- POWER ON WHILE PRESSING AM/FM SWITCH
- RELEASE AM / FM SWITCH AGAIN AFTER 1 SECOND.

LCD SHOWS **d-40**

IF **CH9** SWITCH WILL BE PRESSED, THE LCD WILL SHOW IN SEQUENCE :

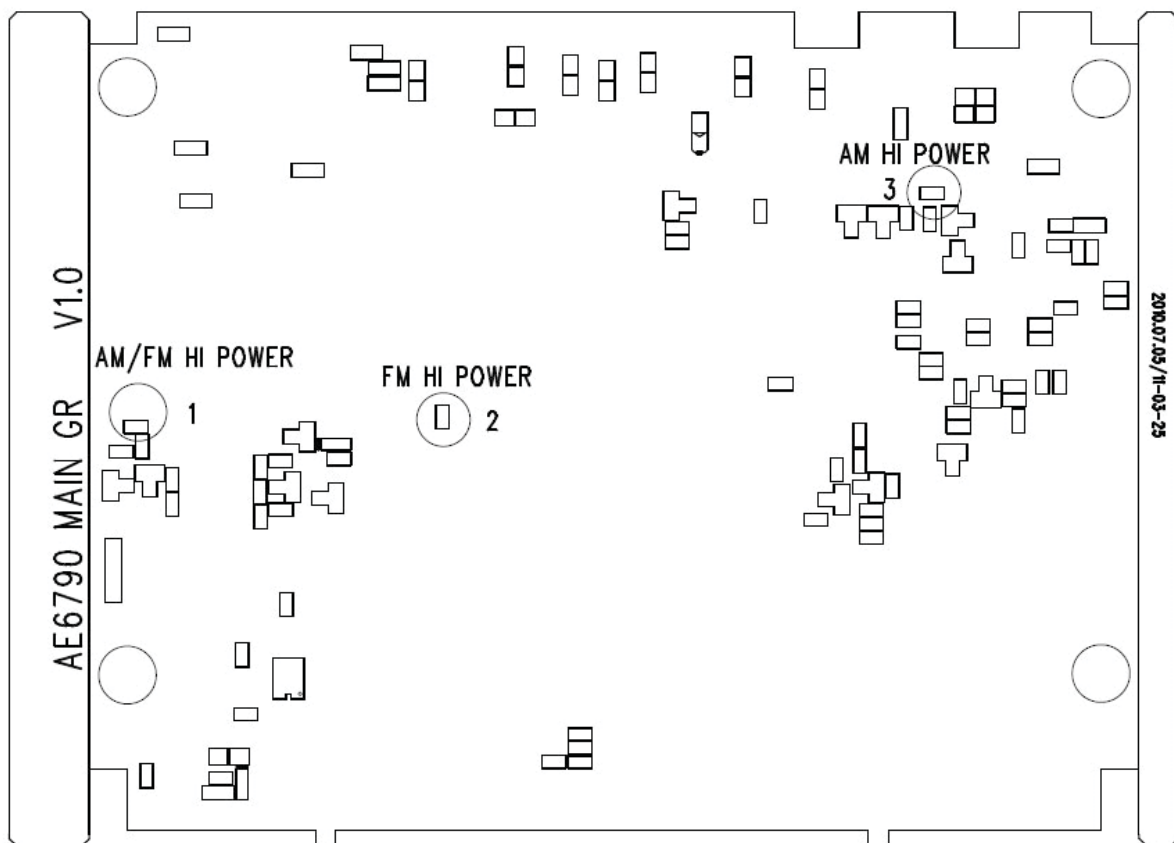
**->E ->F ->A -b->c ->d AS**

BAND CHANGE.



## AE-6790 HI POWER CHANGE

- NO 1 SHOULD BE DONE FIRST REGARDLESS AM OR FM.
- NO 2 IS NECESSARY TO DO FOR FM HIGH POWER.  
FM POWER IS INCREASED BY 1.5~2W.
- NO 3 IS NECESSARY TO DO FOR AM HIGH POWER.
- AM POWER IS INCREASED TO 4W IN CASE WHERE AM JUMPER IS IN THE 1W POSITION
- IN CASE WHERE AM JUMPER IS IN THE 4 WATT POSITION, THE AM POWER IS INCREASED TO THE HIGHEST POSSIBLE VALUE



## AE-6790 240CH CHANGE

- MAKE SHORT CIRCUIT IN BELOW PCB PATTERN.
- 
- POWER OFF AFTER RE-ASSEMBLY.
- POWER ON WHILE PRESSING AM/ FM SWITCH
- RELEASE AM / FM SWITCH AFTER 1 SECOND
- LCD SHOWS **d-40**
- YOU CAN NOW PRESS CH9 BUTTON CONSEQUENTLY  
LCD SHOWS **d ->E ->F ->A - b-> c -> d AS .**

