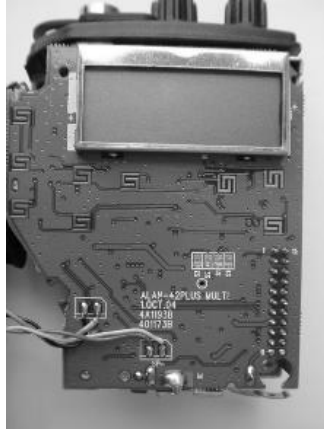
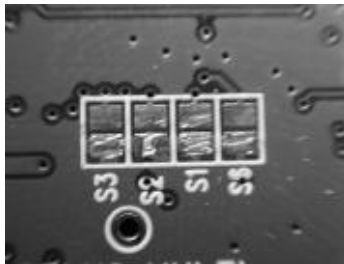


## ALAN 42 MULTI:

- Open the radio and locate the 4 jumpers in the centre of the PC board under the display:



- Work on the jumpers to get the required band:



- The bands : I, I2, d, d2, EU, EC, E, F, UK, are always active by Default, and in addition by acting on the jumpers: S1, S2, S3, S6, it is possible to activate and isolate the bands: PL, PX, RU, SW, according to the following table:

"1" = short circuit

"0" = open circuit

Item	Input Pin Select				Result
	S6	S1	S2	S3	
1	1	1	1	0	Band PL, PX, RU, SW Disable
2	1	1	0	0	All Band Active

- 1) First press **"LCR"** and **"SC"** than turn radio on.
- 2) Use the **"Channel"** buttons located on the side to make selection.
- 3) Press **"LCR"** to confirm.
- 4) Turn radio off