

## PL,PX,RU BAND ALAN48 XL MULTI

To extend the ALAN48 XL MULTI , please follow the procedure here-below:

- open the radio;
- Look for the 4 jumpers. These are located on the frontal board (these are all open);
- if you set the jumpers as indicated here-below you have the following results:

Pin 3 OPEN. PL,PX,RU bands are disabled;

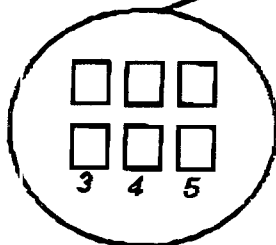
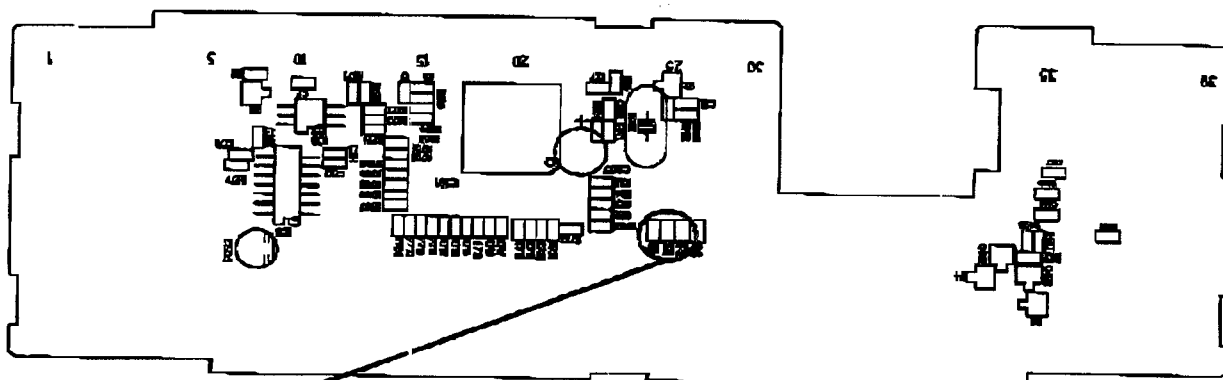
Pin 3 CLOSE. (Pin 4 close and Pin 5 close), PL band activated;

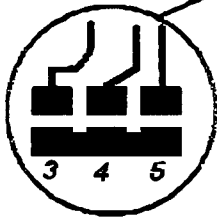
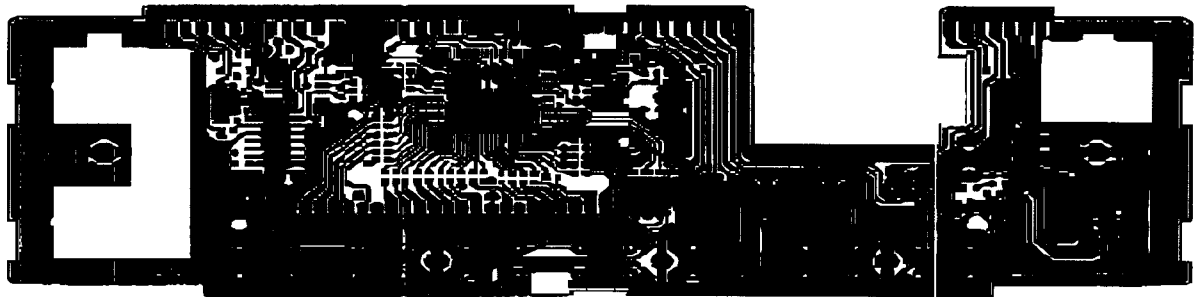
Pin 3 CLOSE. (Pin 4 close and Pin 5 open), PX band activated;

Pin 3 CLOSE. (Pin 4 open and Pin 5 close), RU band activated;

Pin 3 CLOSE. (Pin 4 open and Pin 5 open), PL, PX, RU bands are disabled;

← *RU = 400 ch.*





### 10. Setting Band Option PL,PX,RU

<p>Band option for select or non-select undergrounds band PL PX and RU.Used CPU Pin 3,4,5</p>			
<p>If setting Pin 3 to High .PL,PX and RU Band will disable every function about Transmit and Receives .But another function can be Operation.</p>			
<p>If setting Pin 3 to Low will enable some band.</p>			
<p><u>Setting method.</u></p> <ol style="list-style-type: none"> <li>1. If Pin 3 is Hi. PL,PX,RU band are disable.</li> <li>2. If Pin 3 is L0. (Pin 4 Lo and Pin 5 Lo),PL band is enable.</li> <li>3. If Pin 3 is L0. (Pin 4 Lo and Pin 5 Hi),PX band is enable.</li> <li>4. If Pin 3 is L0. (Pin 4 Hi and Pin 5 Lo),RU band is enable.</li> <li>5. If Pin 3 is L0. (Pin 4 Hi and Pin 5 Hi), PL,PX,RU band are disable.</li> </ol>			